

The Personal Touch
Designed
... only for you



CRAFT-MAID
READING, PA

H A N D M A D E C A R I N E T R Y

Creating

EATING A ONE OF A KIND

Meet with our knowledgeable kitchen designers to express your individualism in creating a one of a kind kitchen. The kitchen is an area of the home that gets a lot of attention and traffic.

So take the space and personalize it for your own use and comfort.



In recent years, handmade cabinetry in every room of the house has become furniture. Therefore, all concepts and details presented in this brochure may be included in your kitchen design from casual to elegant, from country to kitchen furniture, to baths, libraries or complete homes.

HAND-CARVED ARMOIRE

DOOR STYLE: Florentine #2000

FINISH: Caramel

WOOD: Cherry

Design elements include arched crown moulding, carved corners with radius, full length solid brass hinges and hand-carved solid cherry hardware as door pulls.

SIZE: 48" wide x 24" deep x 85" high

CRAFT-MAID



SERIES: Beaded Inset
DRAWER STYLE: Special
FINISH: Wheat
WOOD: Maple
Convex Radius with matching convex pull-outs.



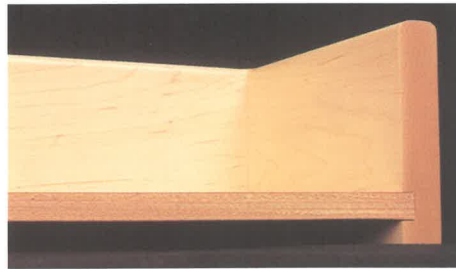
SERIES: Beaded Inset
DOOR STYLE: Special
FINISH: Wheat
WOOD: Maple
Concave Radius with matching concave adjustable lazy susans.



SERIES: Beaded Inset
DOOR STYLE: Special
FINISH: Wheat
WOOD: Maple
Custom designed hand-carving with large scroll, concave radius door and valances.

CRAFT-MAID

Pull-Out Vertical Plate Holder (POVPH)



3/4" hard maple drawer sides, 1/2" plywood drawer bottoms and undermount, full extension drawer slides, which are standard.
Incomparable!

Pull-Out Stacking Plate Holder (POSPH)



Optional Open Front Pull-Out Shelf (OFPOS)
4-1/4" high for maximum visibility

FINISH: Natural
WOOD: Maple



Standard Pull-Out Shelf (POS)
4-1/2" high with Solid Maple Front

FINISH: French Country Medium
WOOD: Select Pine

or Glass
er Front
cludes a
tition 3"
the face
drawer



Series: Traditional Full Overlay
DOOR STYLE: Florentine 5 piece shown with optional Raised Pegs
FINISH: Wheat
WOOD: Maple



SERIES: Flush Inset
DOOR STYLE: Special with Square Lattice (diagonal lattice optional)
FINISH: Antique Spice
WOOD: Mahogany
Applied "Jacobean" Hand-Carved Detail

CRAFT-MAID

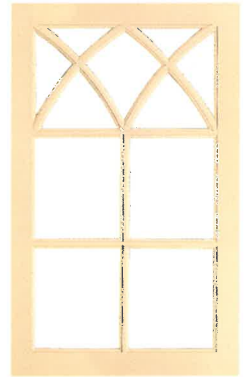
SERIES: Beaded Inset
FINISH: SCM #P429
WOOD: Cherry
*Diagonal Lattice Base
 Wine Rack*



CARVED WOOD HOOD
*ending harp doors and
 Mouth Blown Glass*
 Beaded Inset
 Café Latte
 Paint Grade



SERIES: European
DOOR STYLE:
 Monte Carlo #605
FINISH: Natural
WOOD: Quartered
 & Figured Sycamore
 Veneer with inlays



DOOR STYLE:
 Gothic Curved
 Mullion
 (MDCU)
FINISH: Fawn
WOOD: Maple

**INTERIOR
 4 PANEL DOOR**
to match cabinetry
DOOR STYLE:
 Florentine #2000
FINISH: Wheat
WOOD: Maple
*Shown with Pediment
 and Fluted Frame.
 Door Thickness: 1-3/8".
 Available with matching
 jamb. Shown with door-
 30" wide x 80" high .
 (Other sizes available)*



CARVED ISLAND
 Tradition Full Overlay
STYLE: Florentine #2000
 Antique Red over Mustard
 Paint Grade



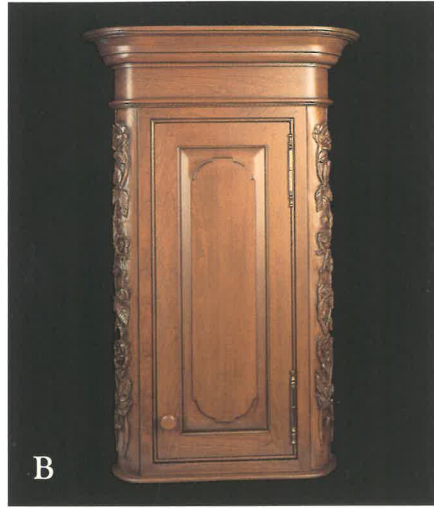
**HAND-CARVED ARCH WITH PLATE
 RACK AND BIN DRAWERS**
SERIES: Traditional Full Overlay
DRAWER STYLE: Florentine 5 piece
FINISH: Antique Red over Mustard
WOOD: Maple

CRAFT-MAID

CONNOISSEUR'S CHOICE



Finish: Antique Ginger
Wood: Clear Pine



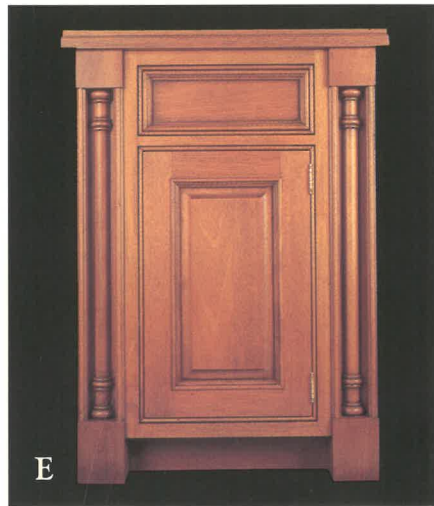
Finish: Chutney
Wood: Cherry



Finish: Sesame Seed
Wood: Paint Grade



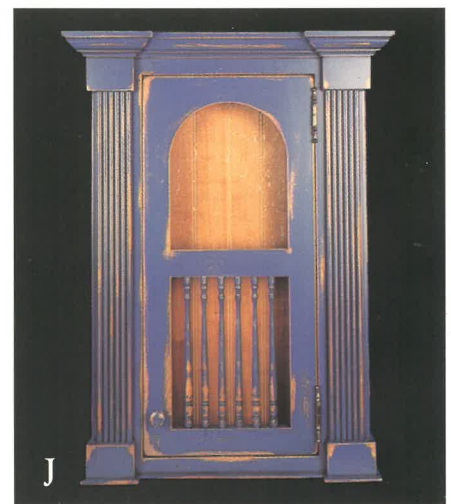
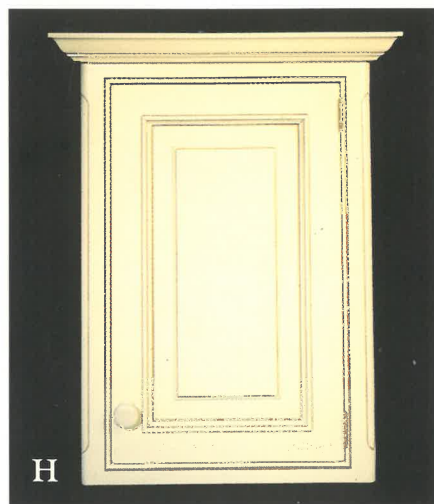
Finish: Meringue
Wood: Paint Grade



Finish: Antique Spice
Wood: Mahogany



Finish: Hazelnut
Wood: Birch



CRAFT-MAID

We offer more than 90 standard finish colors on 12 wood species. Custom finishes can easily be made at your request.



HAND-CARVED CHINA HUTCH

SERIES: Beaded Inset
DOOR STYLE: Special
FINISH: Burgundy with Black Glaze
WOOD: Mahogany

Design elements include a hand-carved pediment with flame in the center, solid brass hinges and seeded glass.

SIZE: 48" wide x 24" deep x 90" high



HAND-CARVED HI BOY

SERIES: Beaded Inset
DOOR STYLE: Special
FINISH: Cayenne
WOOD: Cherry

Each door is hand-carved with a tree that bears fruit.

Top Left: an apple tree

Middle: a cherry tree

Top Right: a pear tree

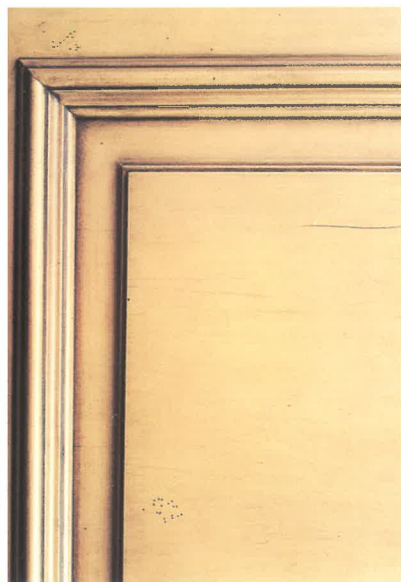
Since many fruits grow close to the ground, each drawer is hand-carved with a plant that bears fruit.

Left drawer: a strawberry bush

Right drawer: a blackberry bush

SIZE: 66" wide x 21" deep x 66" high

CRAFT-MAID



DOOR STYLE: Florentine #2000
with optional double raised pegs
FINISH: Wheat
WOOD: Maple



DOOR STYLE: Georgetown #10
shown with convex raise
FINISH: Celery
WOOD: Paint Grade



SERIES: Beaded Inset
DOOR STYLE: Georgetown #10
shown with French Country raise
FINISH: Aztec
WOOD: Paint Grade

Since your home is a reflection of yourself, feel free to express your tastes not only in the food you serve, but also in the environment you create, by combining the design, the details and the coordination of color. Our kitchen designers have the expertise in all of these areas to help you achieve the greatest results.

CRAFT-MAID

READING, PA

CRAFT-MAID KITCHENS, INC.

501 South Ninth Street, Building C, Reading, PA 19602

Telephone: 610.376.8686 • Fax: 610.376.6998

e-mail: info@craft-maid.com

Visit us on the internet at www.craft-maid.com