

# details

The most unique and spectacular Traditional, Classic, Ageless Country and Contemporary Kitchens handmade in the Pennsylvania Dutch Country.

**CRAFT-MAID**  
READING, PA



Series: Beaded Inset  
 Door Style: Manor House #2500  
 Drawer Style: Manor House #2500 5-Piece Flat Panel Drawer  
 Finish: Aztec  
 Wood: Maple



## Life has changed

The goals today tell us to achieve a life full of spirit – a searching for self-discovery, a quest for independence, a searching for a physical existence that is healthy. Today, living life to its fullest is what life is all about and it's the details that make our lives full and memorable.

### COVER

Series: Beaded Inset  
 Door Style: Victorian #9000 with large G cover raise  
 Drawer Style: Victorian #9000  
 Finish: Antique Spice  
 Wood: Mahogany

*Shown with hand-carvings of pears, hand carved corners, feet and base trim.*



## Designing with hand-carved details

This kitchen is designed with two hand-carved areas as its focal points.

Series: Beaded Inset  
Door Style: Florentine #2000  
Drawer Style: Florentine #2000  
Raised Drawer  
Finish: Café Latte  
Wood: Maple

*Shown with hand-carved grapes, hand-carved corners, feet and base trim. This designer included Victorian leaf work and harp doors.*



Series: Beaded Inset • Door Style: Victorian #9000 • Finish: Antique Ginger • Wood: Select Pine



## Ageless styles

Lifestyles of the family often determine the decor of the kitchen. Many kitchen lifestyles are timeless. Antiques from European countries such as England, France, Germany and Italy influence styles in kitchen motifs. Sometimes antique furniture pieces are included in the layout and design since the antique is also ageless. The photo to the left is an example.

The photos below and to the right have been influenced by eighteenth century English architecture. The precise proportion of pilaster columns and dentil moulding create a classic design indicative of both grace and strength.

### ENGLISH PILASTER

Series: Beaded Inset  
 Door Style: Classic #1035  
 Finish: Special color match #P312  
 Wood: Maple

### ENGLISH PILASTER

Series: Beaded Inset  
 Door Style: Georgetown #10  
 Finish: Sesame Seed  
 Wood: Maple







## Choosing the furniture finish

We offer over 100 standard finish colors in both stains and paints. Included in this selection is a wide variety of white paint colors.

All of the 100-plus finish colors have been developed at the request of homeowners. Each one then became a standard finish in our product line. These unique finishes can be applied to 17 different wood species.

### CORNER TALL HUTCH

Series: Beaded Inset  
 Door Style: Classic #1035  
 Finish: Pistachio  
 Wood: Knotty Pine  
 Optional: Double Raised Pegs, cut nails and distressing

### ISLAND AND TALL PANTRY

Series: Flush Inset  
 Door Style: Special  
 Finish: Sunflower  
 Wood: Knotty Pine  
 Optional: Double Raised Pegs, cut nails and distressing

### OVEN COOKING AREA

Series: Beaded Inset  
 Door Style: Victorian #9000  
 Finish: Antique spice  
 Wood: Select Pine  
 Optional: Pegs, cut nails and distressing



## Arts and crafts/transitional

Pilasters add depth next to the doors. Together with the Roosevelt door style, which has two thicknesses, three depths are created.



Series: Frameless  
 Door Style: Roosevelt #8700  
 Finish: Cayenne  
 Wood: Cherry



## he enlightened approach

Glass doors offer visual variety. Many types of glass are transparent and have the ability to reflect light, which increases a kitchen's visual space.

Glass types fall into three general categories: clear, obscure and opaque. The kind of glass you choose depends on how you feel about displaying the contents of your cabinets.



Series: Beaded Inset  
Door Style: Georgetown #10  
Finish: Special Color Match #1051  
Wood: Cherry



Series: Beaded Inset  
Door Style: Georgetown #10 with Convex Raised Panel  
Drawer Style: Five piece flat panel drawer  
Finish: Special Color Match #917  
Wood: Maple





Series: Beaded Inset  
Door Style: Florentine #2000  
Finish: Special Color Match #1135  
Wood: Maple

### ISLAND

Series: Beaded Inset  
Door Style: Florentine #2000  
Finish: Chutney  
Wood: Cherry





## he enlightened approach *(continued)*



Series: Beaded Inset  
Door Style: Victorian #9000  
Finish: Antique Spice  
Wood: Select Pine

Series: Beaded Inset  
Door Style: French Country #6000  
Finish: Special Color Match #809  
Wood: Maple

### ANGLED ISLAND

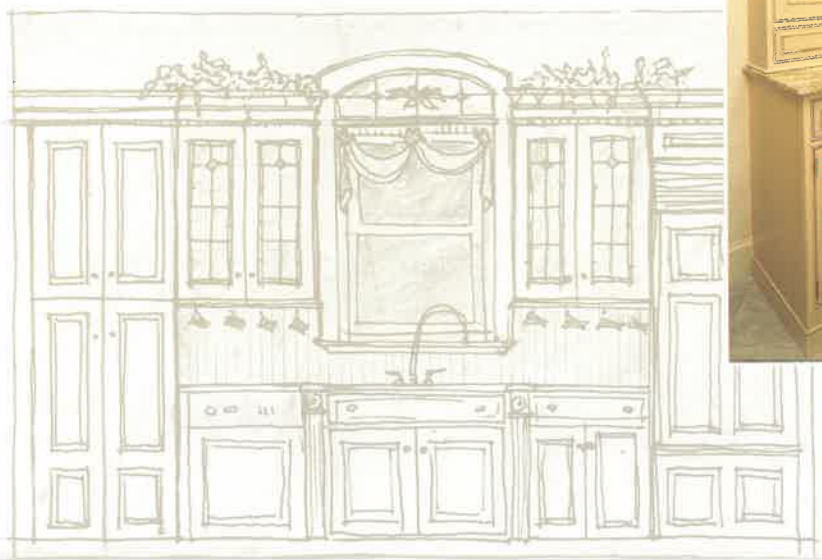
Series: Beaded Inset  
Door Style: Georgetown #10 with Elegant Framing Bead  
and Florentine Raise  
Finish: Special Color Match #388  
Wood: Birch





## Understanding the table or island

Prior to the inception of built-in cabinetry, a free-standing piece of furniture, such as a table, was used with a specific function. Tables evolved into islands since they were often constructed for storage functions and as seating areas. They often included a lower platform.



Series: Beaded Inset  
 Door Style: Victorian #9000  
 Finish: Island - Special color match #343  
 Kitchen and Hutch - Special color match #351 with green glaze  
 Wood: Select Pine  
 Optional: Pegs, cut nails and turn latches

Series: Beaded Inset  
 Door Style: Georgetown #10 with Florentine raised panel  
*Shown at top with leaded glass and special mullion doors with antique glass. Inset shown with double panel doors.*  
 Finish: Special color match #368  
 Wood: Maple  
 Optional: Pegs



## Understanding the table or island (continued)



Series: Beaded Inset  
 Drawer Style: Florentine #2000 raised drawer  
 Finish: Base cabinets - Vanilla, with hand brushed glazing  
 Wall cabinets - Vanilla, with hand brushed glazing  
 Wood: Maple

Series: Beaded Inset  
 Door Style: Victorian #9000  
 Finish: Antique Spice  
 Wood: Select Pine

### ISLAND

Series: Beaded Inset  
 Door Style: Victorian #9000  
 Drawer Style: Victorian #9000  
 Finish: Antique Spice  
 Wood: Select Pine  
 Optional: Pegs, cut nails and distressing



Series: Beaded Inset  
 Door Style: Classic #1035 with Ambassador raise  
 Finish: Base cabinets - Oyster  
 Wall cabinets - Oyster  
 Wood: Maple

### ISLAND AND TALL CABINET

Series: Beaded Inset  
 Door Style: Classic #1035 with Ambassador raise  
 Finish: Caramel  
 Wood: Cherry





Series: Beaded Inset  
Door Style: Victorian #9000 with Florentine raise  
Drawer Style: Victorian #9000  
Finish: Special Color Match #P531  
Wood: Maple

INSET  
Finish: Antique paint, green over blue green  
Wood: Maple





## Understanding the table or island (continued)

Series: Beaded Inset  
Door Style: Victorian #9000 with large G cove raise  
Drawer Style: Victorian #9000  
Finish: Vanilla, with hand brushed glazing  
Wood: Maple

Series: Beaded Inset  
Door Style: Victorian #9000  
Finish: Flax  
Wood: Maple





## he importance of high quality interiors

Whatever the lifestyle and whatever form of construction, all handmade cabinetry fitted with doors is finished with natural furniture grade maple interiors. When the exterior is stained or painted, a natural maple interior is the universal standard for high quality cabinetry.

These interiors are supplied with a durable finish, comparable to that of the exterior, for years of reliable use. Of course, when cabinet interiors are open and the doors are omitted, the interior may be finished in any color of your choice.



Series: Beaded Inset  
Door Style: Victorian #9000 with large G cove raise  
Drawer Style: Victorian #9000  
Finish: Antique Spice  
Wood: Mahogany

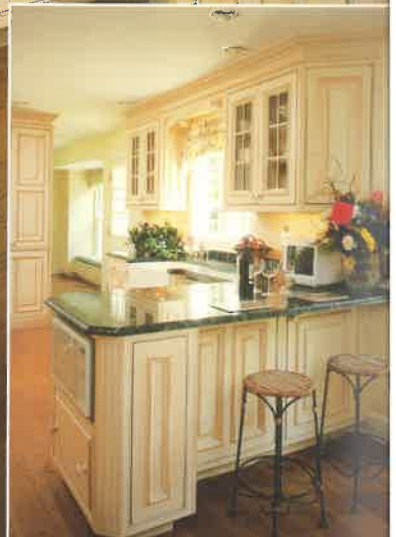
*Shown with hand carvings of pears, hand carved corners, feet and base trim.*



Series: Beaded Inset  
Door Style: Victorian #9000 with Florentine raised panel  
Drawer Style: Victorian #9000  
Finish: Special Color Match #1323  
Wood: Maple

Series: Beaded Inset  
Door Style: Victorian #9000  
Finish: Java  
Wood: Select Pine  
Optional: Pegs and Cut Nails







## electing the wood species

Throughout this portfolio of lifestyles, several wood species have been used in combination with many finish colors. There is an infinite number of combinations of wood species with different finishes, so it is important at this time to list all 17 wood species as a starting point in the selection process. They are: Maple, Birch, Cherry, White Oak, Quarter Sawn White Oak, Rift Cut White Oak, Red Oak, Quarter Sawn Red Oak, Rift Cut Red Oak, Clear Pine, Select Pine, Knotty Pine, Heart Pine, Walnut, Wormy Chestnut, Mahogany, and Alder.

Series: Beaded Inset  
 Door Style: Florentine #2000  
 Finish: Vanilla with hand brushed glazing  
 Wood: Maple  
*Shown with fully concealed hinges*

Series: Beaded Inset  
 Door Style: Florentine #2000  
 Finish: Natural  
 Wood: Walnut



### KITCHEN

Series: Beaded Inset  
 Door Style: Florentine #2000 with flat panel & Manor House #2500  
 Finish: Aztec  
 Wood: Maple

### HUTCH AND ISLAND

Series: Beaded Inset  
 Door Style: Florentine #2000  
 Finish: Special Color Match #P639  
 Wood: Maple

### TABLE

Finish: Antique Toffee  
 Wood: Clear Pine





- Series: Flush Inset
- Door Style: Colonial #4000
- Finish: Base cabinets - Burgundy
- Wood: Select Pine
- Wall cabinets - Special Color Match #P187
- Wood: Maple
- Table - Antique paint - mustard over red
- Wood: Maple
- Optional: Pegs and cut nails (table only)

**BREAKFRONT**

- Finish: Burgundy
- Wood: Select Pine
- Shown with antique glass, double beaded back and solid wood top.*



- Series: Flush Inset
- Door Style: Colonial #4000
- Finish: Anise
- Wood: Maple
- Optional: Pegs, cut nails and turn latches



## Understanding the hutch and pantry

Kitchens long ago usually included a hutch as an exceptional furniture piece that was for the purpose of showcasing the treasures of the family, such as pewter, glass or china.

This specialized furniture was also used as a pantry for the storage of provisions, utensils and kitchen equipment.

In this day and age, the modern hutch and pantry may be a free-standing furniture piece or it may be designed as an integral part of the kitchen.









## Reclaiming the past

The “Archives Collection” derives its name from preserving extinct wood and reclaiming the lumber for use in handmade kitchens.

More than 200 years ago, Chestnut trees were attacked by worms that bored into the wood at many different angles. The result of these events accounts for the wood’s beauty and interesting character. Wormy Chestnut is only available when the wood is recycled.

During the eighteenth and nineteenth centuries these trees were harvested for wide use in construction. A large number of barns in Pennsylvania were built using these trees. The main structure of these barns consisted of solid 12-inch square beams.

When these barns are disassembled, the wormy chestnut beams are sawn into one-inch thick lengths of lumber and are recycled into spectacular kitchens, such as in the photograph on the facing page.

Series: Flush Inset  
Door Style: Colonial #4000  
Finish: Natural  
Wood: Wormy Chestnut

*Shown with solid Wormy Chestnut exposed ends. This is a design consideration since veneers are not available.*



Series: Flush Inset  
Door Style: Shaker #5000  
Finish: Chestnut  
Wood: Cherry  
*Note the horizontal alignment of the upper doors shown at right.*



## American Shaker



The “Shakers” were a nineteenth century religious society. They lived in villages from Maine to Kentucky that were known for their uncomplicated, warm and unpretentious lifestyle. Their cabinetry was a reflection of their style of life. Shaker cabinetry is shown in the photographs above. Shakers often used tall sets of stacked drawers to save space.



## Understanding the hearth

A state-of-the-art appliance is today's counterpart to the great fireplaces of the past that were used for cooking, roasting and baking. This cooktop is used with a hearth-like hood which collects and removes heat, odors and smoke generated by cooking. Each hood is a symbol of welcoming warmth.



Series: European Frameless • Door Style: Florentine #2000 • Finish: Special color match #826 • Wood: Maple

Series: Traditional Full Overlay  
Door Style: Georgetown #10 with G cove raise and Elegant Framing Bead  
Finish: Special color match #530L  
Wood: Maple



Series: European Frameless Pilaster  
Door Style: Florentine #2000  
Finish: Vanilla with hand brushed glazing  
Wood: Maple

*Each door shown with surrounding wood trim which creates an Inset Door even though the construction is frameless.*



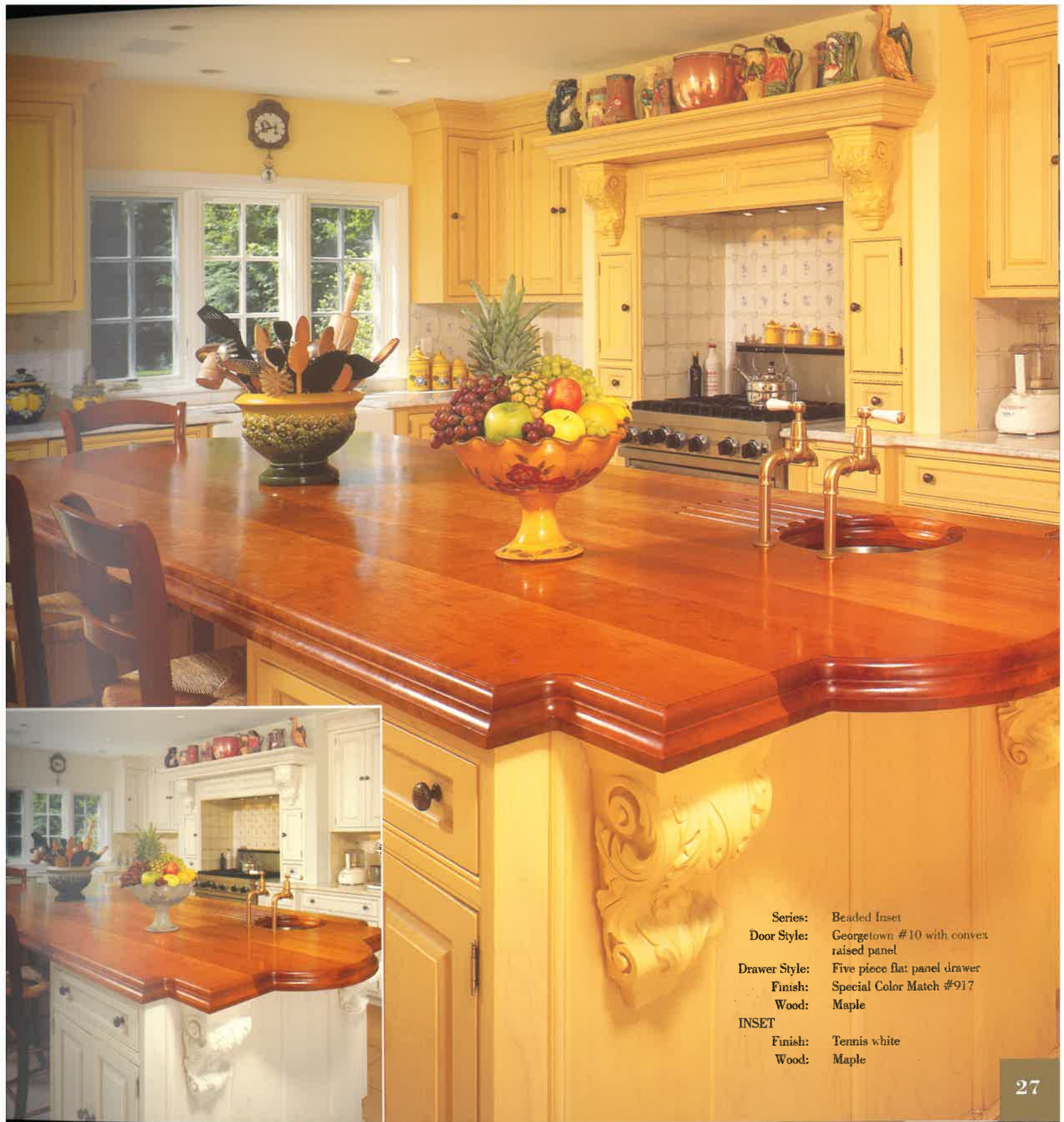


# Understanding the hearth *(continued)*

Series: Beaded Inset  
Door Style: Georgetown #10 Flat Panel  
Finish: Natural  
Wood: Maple

Series: Beaded Inset  
Door Style: Georgetown #10  
Finish: Wheat  
Wood: Birch





- Series: Beaded Inset
- Door Style: Georgetown #10 with convex raised panel
- Drawer Style: Five piece flat panel drawer
- Finish: Special Color Match #917
- Wood: Maple
- INSET
- Finish: Tennis white
- Wood: Maple





# Understanding the hearth *(continued)*

Series: Beaded Inset  
 Door Style: Victorian #9000 with Florentine Raised Panel  
 Drawer Style: Victorian #9000  
 Finish: Olde World  
 Wood: Maple  
*Shown with HCCB hand-carved corner in foreground*



Series: Beaded Inset  
 Door Style: Victorian #9000 with large G cove raise  
 Drawer Style: Victorian #9000  
 Finish: Antique Spice  
 Wood: Mahogany

Series: Flush Inset  
 Door Style: French Country #6000  
 Finish: Antique Spice  
 Wood: Clear Pine  
 Optional: Pegs and distressing









# The contemporary lifestyles

Which kitchen best fits your lifestyle? As you reach a decision you will probably decide on your choice for a number of reasons.

If your choice is a sleek contemporary kitchen, as in the photograph to the left, you may accessorize your surroundings as much or as little as you choose.

These European-style kitchens feature fully concealed, fully adjustable, self-closing hinges. The doors and drawers practically cover the entire face of the cabinetry, which differs from other styles, that emphasize the face of the cabinet frame, as in the photograph at the top of this page.



Series: Executive Flush Inset • Door Style: Hanover #6535 (5/4) • Doors and Drawers - Finish: Vintage Cherry • Cabinetry - Finish: Gingerbread on Maple

Series: European Frameless  
Door Style: Special Custom  
Finish: Special color match #278  
Wood: Maple

Series: European Frameless  
Door Style: Hanover #6535  
Drawer Style: Five piece flat panel drawer  
Finish: Natural  
Wood: Maple





## few words about quality

Although we live in an age of mass production, we still believe in craftsmanship and the use of the highest quality materials. This, more than anything, explains why every kitchen is still hand-made to order. Each individual cabinet is identified with the order number, while the underside of each drawer contains the name of the intended user.

Not even the fine photographs in this brochure can convey the highest standards of quality. A visit to a studio is the best way to appreciate our uncompromising commitment to quality.

*Designed with pocket doors, refrigerator drawers and bottled water dispenser storage.*

Series: Beaded Inset  
Door Style: Florentine #2000  
Drawer Style: Florentine #2000  
Finish: Vanilla with hand brushed glazing  
Wood: Maple



Series: Beaded Inset  
Door Style: Florentine #2000 with flat panel  
Drawer Style: Florentine #2000 five piece with flat panel  
Finish: Aztec  
Wood: Maple

Series: Beaded Inset  
Door Style: Georgetown #10  
Drawer Style: Five piece English Country drawer front  
Finish: Meringue  
Wood: Maple







# Furniture as personal as your signature

Fine handmade furniture can be designed for rooms other than the kitchen. It can be an individual free-standing piece of furniture, such as the examples on these pages.

## FIREPLACE AND MANTLE with open bookshelves.

Series: Flush Inset  
Door Style: Classic #1035  
Finish: Frost  
Wood: Maple

## THE BATH

Series: Beaded Inset  
Door Style: Victorian #9000  
Finish: CM103 White with center panel Seafoam Green (rag rolling)  
Wood: Maple

## THE RADIUS VANITY

Series: European Frameless  
Door Style: Georgetown #10 radius doors  
Finish: Special color match #P158  
Wood: Maple

*Shown with custom triple door medicine cabinet*

## THE BAY FRONT

Series: Beaded Inset  
Door Style: Georgetown #10  
Finish: Special color match #P316 with black glaze  
Wood: Maple  
Width: 48"  
Height: 95 3/4"  
Depth: 21" (plus 3" Bay Front)

## THE HUTCH

Series: Beaded Inset  
Door Style: Special Custom  
Finish: Sesame Seed  
Wood: Maple  
Width: 72"  
Height: 91"  
Depth: 24"



## OVEN PANTRY

Series: Beaded Inset  
Door style: Florentine #2000  
Finish: Aztec  
Wood: Maple  
Width: 60"  
Height: 93"  
Depth: 24"



## BAR HUTCH

Series: Beaded Inset  
Door style: Victorian #9000  
Drawer style: Victorian #9000  
Finish: Antique Spice  
Wood: Mahogany  
Width: 72"  
Height: 105 1/2"  
Depth: 18"



## THE ARMOIRE

Series: Beaded Inset  
Door Style: Special Custom  
Finish: Sesame Seed  
Wood: Maple  
Victorian Country Cupboard offers ample storage as a wardrobe, a dresser, or as a TV/Entertainment center  
Width: 55"  
Height: 91"  
Depth: 29 1/4"



## and-carving.

Hand-carving is truly an art form. It has been used as an element of design for centuries in every country throughout the world.

Why a rose? The rose has universal appeal and has been immortalized in “Romeo and Juliet,” the “Tournament of Roses” and the “Run for the Roses.”

Hand-carved details may be created in a wide variety of designs. Choose your favorite flower, such as a rose, daffodil or tulip.

Hand-carved solid wood can take any shape you desire. If flowers are not your favorite, the hand-carving may be of fruit, such as strawberries, grapes, pineapples or cherries. If you'd rather have hand-carved birds, butterflies, or leaves from any tree, that is also possible. Your imagination can be transformed into unique hand-carved details.

Series: Beaded Inset  
Finish: Chutney  
Wood: Cherry

*The “Elegant Powder Room,” with matching mirror frame, is designed to utilize both proper proportions and intricate details. It is seen by every guest that is invited into the home. Each guest feels important because their hosts want to make a good first impression.*



Series: Beaded Inset  
Door Style: Buckingham #5500  
Finish: Chutney  
Wood: Cherry  
Optional: Pegs



**Top:** The detail of the hand-carved leg at the corner of the cabinet “flows” into the hand-carved valance. A design detail used in making fine furniture for centuries.

**Center:** Hand-carved grapes for use on a valance or wood hood accent a focal point.

**Below:** A timeless, classic leg hand-carved to accentuate the corner detail.

**Right:** A cluster of grapes hand-carved in a solid wood corner. The realism makes it appear as though the grapes are ready to be picked.



Series: European Frameless  
Door Style: Siena #2900  
Finish: Special color match #1036  
Wood: White Oak



Door Profile

*Unique door styles can be developed to your personal specifications.*





# details

## CRAFT-MAID

READING, PA

Ever since Craft-Maid Kitchens was established more than 30 years ago, its original philosophy has not changed – *offer the greatest degree of flexibility, with products that are on the cutting edge, while maintaining consistently high quality and workmanship. Do all this work with a heightened awareness to details in every custom-designed and hand-made product, whether it be in selecting the woods or in designing the special features and elements that make a particular kitchen unique.*

These details are also evident in the hand-carvings that may be designed as one-of-a-kind pieces. This uncompromising attention to detail is also given to every request for special colors, which results in the mixing and blending of new stains and paint colors. Many times a combination of special colors and techniques is needed when a multi-step finish is required.

This unyielding attention applies to *every detail* every day, especially in the finishing process.

### CREDITS

SIGNER	PHOTOS
thy Dietz, William Krider, Photographer	Cover, Page 16 (top), Page 29 (top)
na Dove	Inside Front Cover, Page 19 (top), Page 32 (bottom), Page 35 (top)
rma Rhine	Page 1
ott Seibold	Page 3
nthia S. Muni	Page 4
ul F. Hansalik	Page 5
ul Riemer	Page 6 (bottom), Page 27
th Riemer	Page 6 (top), Page 8, Page 10, Page 20
lk Fahmie	Page 7
ff Brockway	Page 9
ren Bieszczak, David Steinbrunner, Photographer	Page 12 (bottom)
m Bytner, CKD, John Murphy, Photographer	Page 12 (top), Page 32 (top)
san Serra, CKD	Page 13, Page 34 (top right)
me Boyer, ASID	Page 14
ury Therese Russo, CKD	Page 15, Page 24 (bottom), Page 25
nn Myefski and Sunny Allen, Kaskel Architectural Photography, Inc.	Page 16 (bottom), Page 28, Page 18, Page 26 (top), Page 29 (bottom)
ark Maznio	Page 19, Page 33
chard Fakadej, Brady Architectural Photography	Page 21, Page 30, Page 34 (top left)
eila Gallagher, ASID	Page 24 (top), Page 36
skie Brown	Page 26 (bottom)
rry Bass	
amifer Freymiller and Charles Cook Kaskel Architectural Photography, Inc.	Page 31 (top)
m Bytner, CKD, Steven Paul Whitsitt, Photographer	Page 40

Craft-Maid Kitchens may be purchased from select kitchen design professionals throughout North America and Europe.

These designers are highly trained and experienced in producing the results you expect in your new kitchen. They are skilled in knowing how to use space effectively and have proven themselves in the art of creative design.

Authorized Craft-Maid design studios work directly with each homeowner or their representative to complete the entire project. They also provide expert installation.

From concept and design to the final installation, you are assured of constant attention to details.

Finished with  by Sherwin-Williams

© 2002 Craft-Maid Kitchens, Inc.

Please view actual wood sample before making your final color selection.  
All specifications are subject to change without notice.



# CRAFT-MAID

---

READING, PA

## CRAFT-MAID KITCHENS, INC.

501 South Ninth Street

Reading, PA 19602

*Telephone:* 610.376.8686

*Fax:* 610.376.6998

*E-mail:* [craft-maid.com](mailto:craft-maid.com)

Visit us on the internet at [www.craft-maid.com](http://www.craft-maid.com)

<sup>8</sup>8.<sup>00</sup> Each

BP0210-M