

*solarium* Designer Frank DelleDonne was inspired by the view of the gardens, the scale of the room, and the natural light in the solarium (opposite top). He wanted to bring the outside in, which he did with a furniture layout that allows everyone to enjoy the views. He also mixed textures and scale for a natural feeling. The ceiling is covered in strié wallpaper cut and installed in a basket-weave design. The walls are hand-blocked wallpaper featuring roses scaled to suit the room. The gardens influenced the lighting fixtures, including the twig chandelier hand-painted to resemble birch trees and polished nickel sconces that resemble branches. The fireplace screen (not shown) was custom-designed and made to mirror the interior curve of the fireplace. The large piece of art hanging above the carved altar table is a charcoal drawing of roses and is part of DelleDonne's personal collection. He designed the large-scale base molding with a carved Greek key motif and chose sisal layered with antique runners for the floor. DelleDonne says the furniture and accessories span decades, continents, materials, tones, and textures, resulting in a comfortable, elegant room that will stand the test of time.

*dining room* Luis Acevedo Interior Design created a dining room for a young, sophisticated family (opposite bottom). A backdrop of ivory, celery, and pale coral is the perfect foil for an eclectic collection of furniture in a mix of rich dark wood stains and hand-painted finishes. Two tables, of very different styles, can accommodate a large formal dinner party or a casual lunch for four near the windows. With exposures to the east, south, and west, the room affords spectacular views of the formal gardens and reflecting pool all year round.

*flower cutting room* The sophisticated design of the flower cutting room and flower anticipation room (seen through the arched doorway at top right) takes cues from the home's architecture. Jim Dove of Canterbury Design chose dark cherry dyed cabinetry with crackle mirrors and embellished with beveled glass flowers to create an airy, reflective space ideal for cutting and arranging flowers, provided here by Jerry Rose Floral & Event Design.

*serving room* Designers Diane Romanowski and Kathleen Wallace created the elegant serving room (bottom right). Decorative artist Carrol DiLustro of The Painted Finish implemented artistic finishes, including the goldleaf ceiling, stained wood floor, and distressed-wax cabinets. Their collective goal was to enhance the existing architecture and design an elegant transition from the kitchen to the dining room. They created a memorable space with a diverse palette of sensuous fabrics, fine details, and rich finishes. The design scheme reflects their philosophy of timeless quality that captures both beauty and functionality.



PHOTO BY JOAN MARTELLI

PHOTO BY JOAN MARTELLI

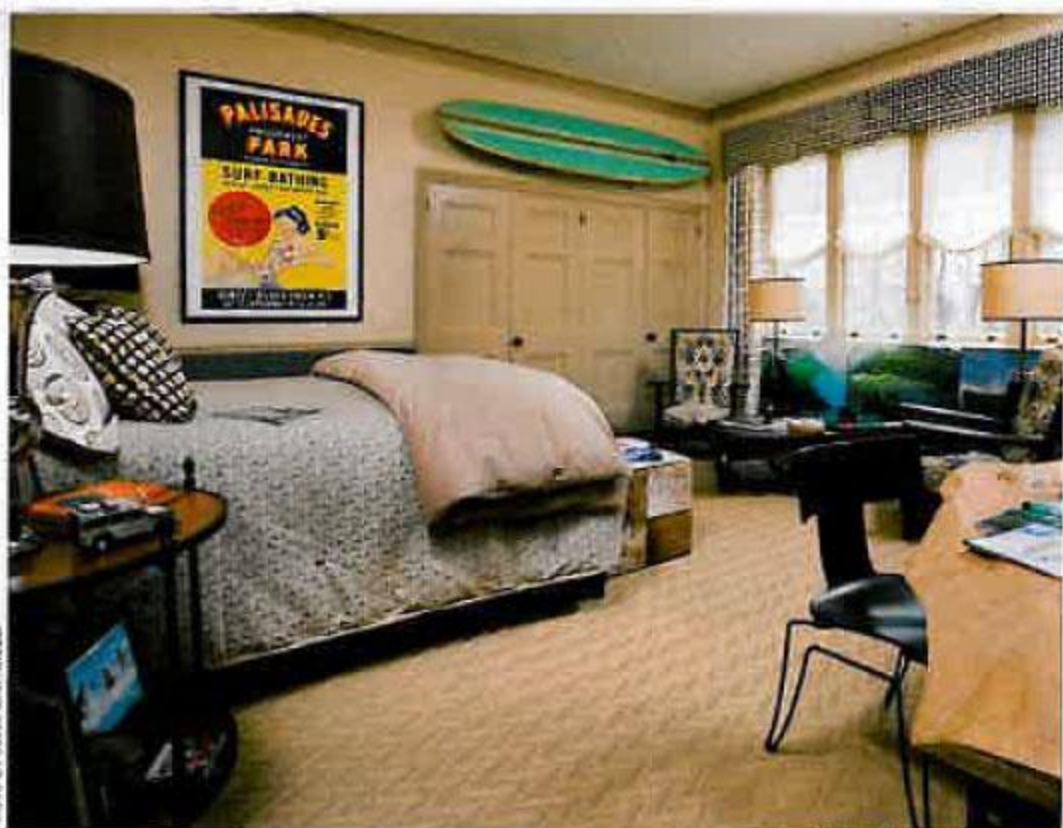


PHOTO BY JOHN MARTINELLI



PHOTO BY JOHN MARTINELLI



PHOTO BY JOHN MARTINELLI

*owen's room* Carol Morris and her staff at Swift-Morris Interiors created a teenaged boy's room, aiming for a space that would accommodate the transition from childhood to young adulthood and highlight the various interests marking that change. "The room is centered on a neutral palette, and we kept the space interesting through layered textures and an array of funky found objects," says the firm's Danielle Ross. The seemingly simple scheme allows the room to act as a backdrop against which this young man has claimed the space by displaying memorabilia reflecting his interests. Geometric fabrics, solid suedes, and a clean but strong pinstriped wallpaper anchor the room. They're enlivened by unique furniture that includes a free-form wood desk and colorful artwork.

*guest office* Tricia Fitzsimmons of Bienvenue Home/Ambiance partnered with Leida Rodenburg of Leida's Sewing to create a warm and inviting space in the guest office through the use of rich fabrics, warm colors, and an eclectic mix of furniture and artwork, including an Asian-inspired deep red chest standing opposite a desk and Parsons chair covered in an eye-catching striped fabric.

*laundry* From the hexagon Calcutta gold marble and oak floor to the maple cabinetry painted in soft yellow, the laundry is a warm, light spot designed by David Chiarella, a certified kitchen designer, and principle of Creative Kitchens. Other features include a durable Pietra Cardoza granite countertop, a retractable built-in ironing board, and double soaking sinks that are perfect for tending to delicates, maintaining house plants, or cleaning up after arts and crafts. A sewing area (not shown) includes a drop-down sewing machine and a large collection of thread spools to make tailoring easy and colorful.